

**Gorse Action Group**  
**Conference Call**  
**Meeting Notes**  
**June 20, 2016**

**Attending:**

Alexis Brickner – Coos Watershed Association  
Marie Simonds – Wild Rivers Coast Alliance  
Jim Seeley – Wild Rivers Coast Alliance  
Hannah McDonald – South Slough  
Robert Franson – CFPA  
Norma Kline – OSU Extension  
Erin Minster – Curry SWCD  
John Bragg- South Slough

**Mapping Project Update**

Alexis has been working with Emilie Henderson of the Institute for Natural Resources. Emilie is working on the Random Forest Modeling which will provide an output of areas of potential spread for gorse. Attached to these minutes is a set of draft maps from May 2016. Erin Minster (Curry SWCD) has been collecting data in Curry County to add to the dataset along with the data collected by Alexis's crew in Coos County. Erin helped sort out road areas for absence points. Erin confirmed with Clint Emerson from the USFS about gorse locations on Forest Service land. A lot of the yellow area is bare ground as potential for high probability spread. On Forest Service land, the thinned units are showing up as higher probability so Erin's crew went out to find for information in these areas. Emilie is also putting on a serpentine "overlay" which basically makes those areas absent of gorse. She is also using an ownership layer of type of owner (private forestry, public forestry, etc).

The last draft will be completed on June 27, 2016 with the final map completed by the end of the month. Emilie will write up the details in July.

**Demonstration Project**

Alexis and Eric Mruz (USFWS) have met with Rick Berello of All Terrain Brushing to provide a quote for the Coquille Point project. He will be working with Liza Ehle of By-the-Sea Gardens in Bandon. Rick has been very busy this spring and hasn't provided an exact quote yet but the project has been postponed until the fall due to bird nesting and fire risk. This project will be documented by photo and video once it gets underway to provide a start to finish picture of a gorse control project. Eric's summer intern, Beatrice Serrano-Martinez, created a pamphlet describing the Coquille Point project, gorse, and the GAG.

No movement has been made on the Pacific View Living Center project. Alexis has been in touch with Todd Tripp of the Coquille Tribe to discuss the project earlier this spring.

Marie provided an update on the Coos County Mountain Bike Project that was identified by the.....The specific proposal was put in conjunction with Coos County Forestry on Coos County land. The funding would create a single track mountain bike trail which would entail removing gorse. The first phase of the project has been approved. Some educational signs may be placed on the trail as well about gorse and returning lands to productive landscapes. This is a concerted regional effort by a number of stakeholders to bring in mountain bike tourists.

Jim provided an update on the donut hole, a large unincorporated area of gorse that presents a huge fire risk.

## **Oregon Solutions**

Jim has been talking with Steve Greenwood and Alex Campbell of the Oregon Solutions teams about making gorse an Oregon Solutions project. Steve is going to send someone to perform an assessment on the gorse situation to become an Oregon Solution. Jim has discussed some complacency in gorse control in the coast with the Oregon Solutions. Jim talked with OISC about gorse because they did not have it anywhere on their website. He presented on the fire history of gorse around Bandon. Our mapping project photos, and photo archive of fire history make us strong contenders.

In relation to this, Jim mentioned that he had spoken with Mark Systma of the Center for Rivers and Lakes at Portland State University. He has a Ph.D. candidate who is interested in studying eutrophication by nitrogen fixing plants. This could be a great opportunity to partner with a university on gorse research.

Jim also mentioned discussions with Neighbor Works Umpqua, an organization that aids communities with housing issues. This could be a good organization to work with on gorse control in the donut hole.

## **Gorse Blossom Festival**

Hannah McDonald noted that the Gorse Blossom Festival (GBF) website contains a phrase saying “we celebrate the gorgeous gorse in all its glory”. This type of advertisement is exactly the concern of the group. Marie spoke with the organizers of the festival since WRCA was asked to be a sponsor. Marie said that the organizers were happy to have GAG’s honest and candid feedback. Marie stated that WRCA will pull out of their financial commitment with the current name of the festival but left the door open should they decide to remarket the festival. The organizers had a positive reaction. They have been having conversations with locals about the name and may or may not change it. Alexis suggested that they still attempt to help with education efforts before and during the festival.

## **Fire resistant plant garden**

Alexis has been in touch with Matt Winkel, interim City Manager, about a garden site. He suggested the planned Eastside Park near the Harvard Apartments or in front of city hall off of Highway 101. The Eastside Park site is where the wood vinegar trials were held and would be a great addition to that project but less visible. City hall would be very visible but would require lots of maintenance. Alexis is going to meet with Harv Schubothe of the Greater Bandon Association to talk about long-term maintenance of the garden. Alexis has also reached out to the Master Gardeners but has not heard back. The plan is to install the garden this fall using volunteers from the community and plants from the Go Native nursery. Norma Kline stated that she could help with contact to the Master Gardeners.

## **Outreach**

Alexis, Jim and Marie have edited the GAG pamphlet that was created last summer to include the logo and update the member list. This would be the perfect time to distribute the pamphlet at local outreach events including the Coos County Fair and the Bandon Farmer’s Market. Alexis has met with Will Bailey, a private citizen of Bandon and a new member of the Coos County Noxious Weed Board. Will suggested handing out the pamphlet at the County Fair. He is also available to sit at the Farmer’s Market to talk about the GAG and hand out the pamphlet.

## **Oregon Wildfire Risk Explorer**

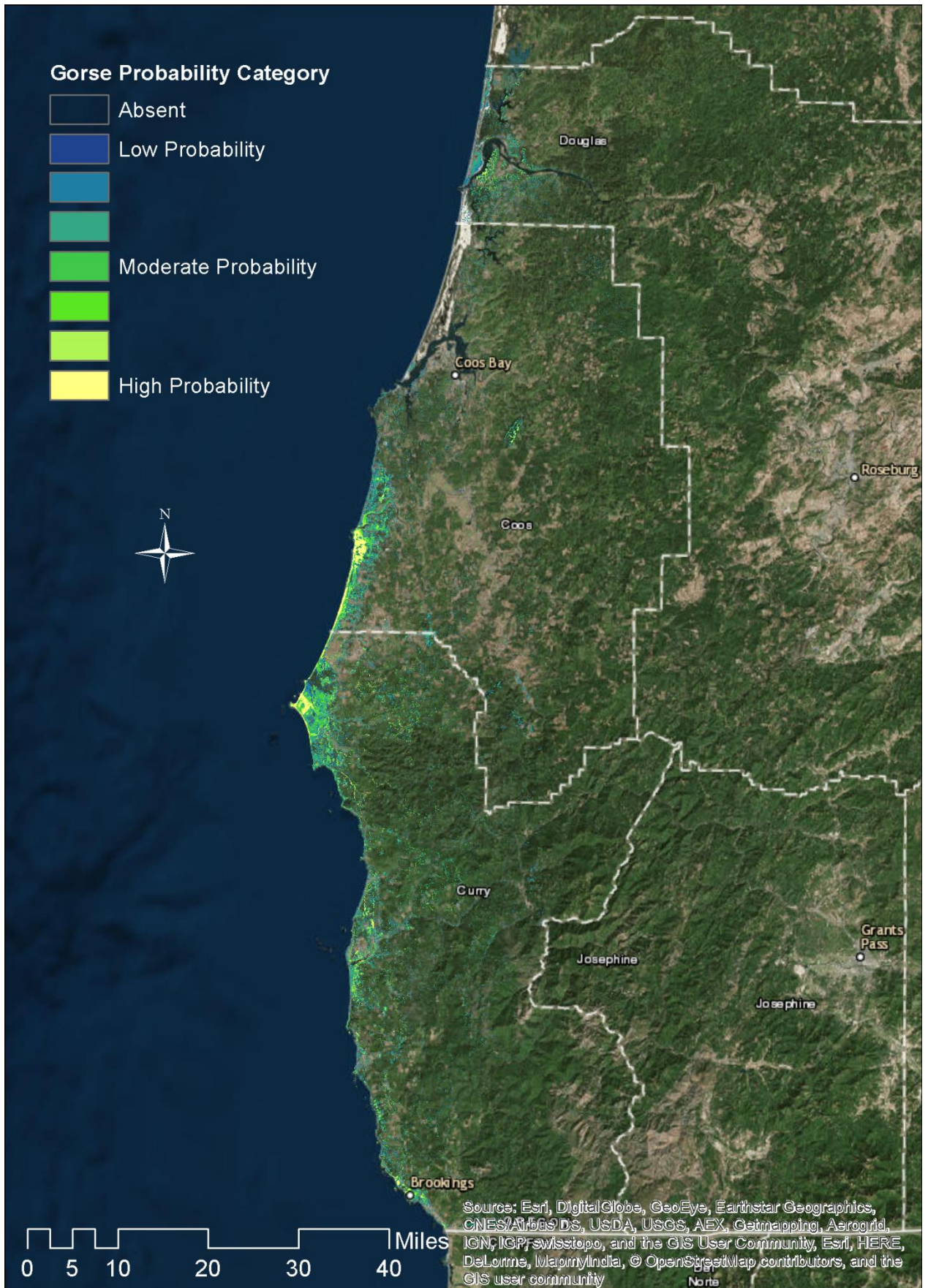
Alexis was asked by Cindy Kolomechuk of ODF to be on the Steering Committee for the Oregon Wildfire Risk Explorer, a new project that will bring wildfire risk data to community planners and the public through a web-based tool. This project is led by ODF and the Institute for Natural Resources. Alexis has attended two meetings so far. The first meeting was an introductory meeting and the second meeting discussed the current data layers that are available and how they would be useful on the Wildfire Risk Explorer site. Alexis was able to talk about gorse, the lack of data on the extent of gorse and how

that relates to this new tool. Alexis is also now part of the GIS/Spatial Data subgroup of the committee which will discuss the data to be used and the overall risk map. This provides a great opportunity to include gorse in the wildfire risk discussion.

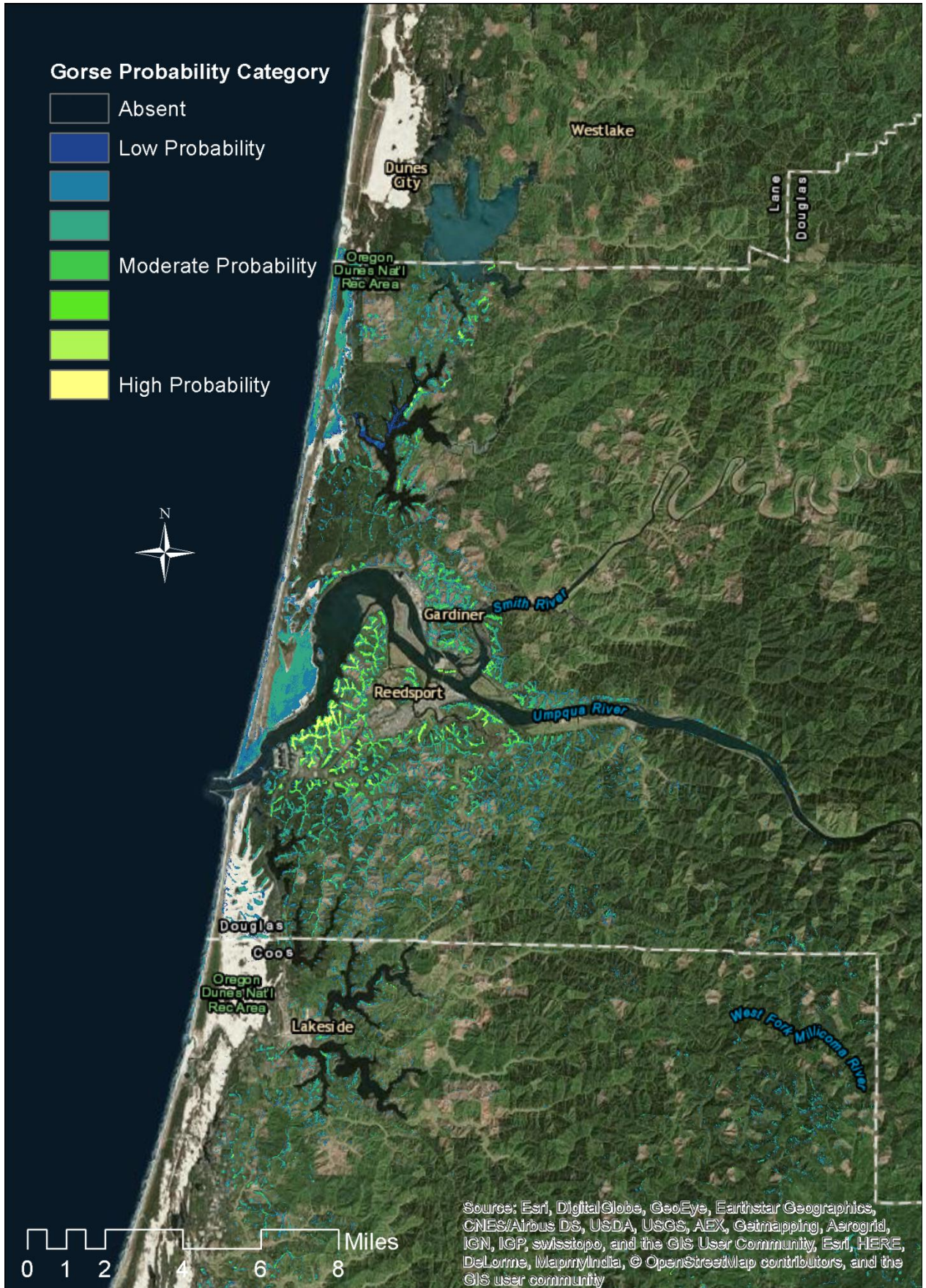
**July Meeting**

Alexis will send out a Doodle poll for a conference call towards the end of July.

# Overview



# Reedsport



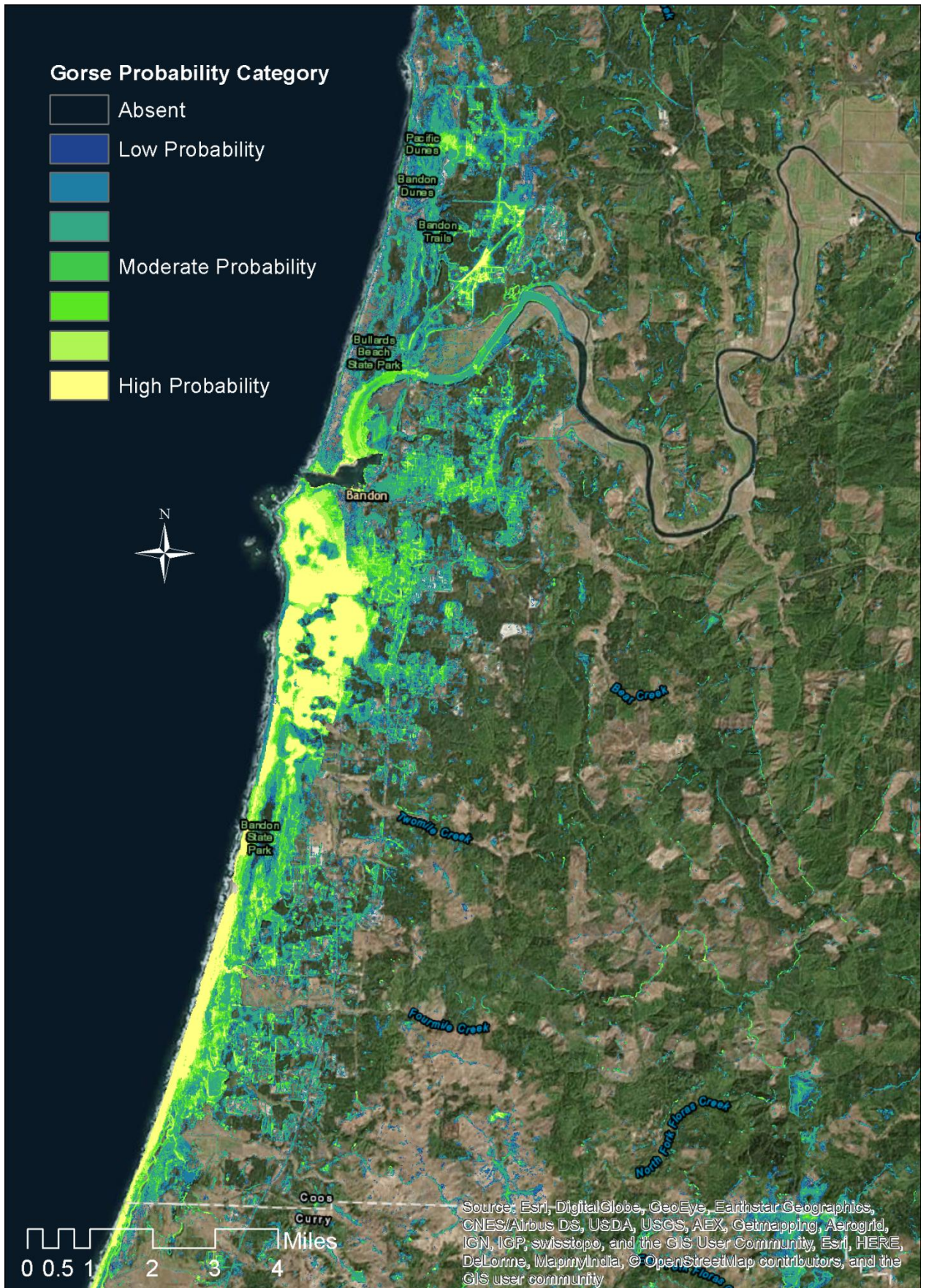
# Coos Bay

## Gorse Probability Category



Sources: Esri, DigitalGlobe, GeoEye, Earthstar Geographics, CNES/Airbus DS, USDA, USGS, AEX, Getmapping, Aerogrid, IGN, IGP, swisstopo, and the GIS User Community, Esri, HERE, DeLorme, MapmyIndia, © OpenStreetMap contributors, and the GIS user community

# Bandon



# Cape Blanco

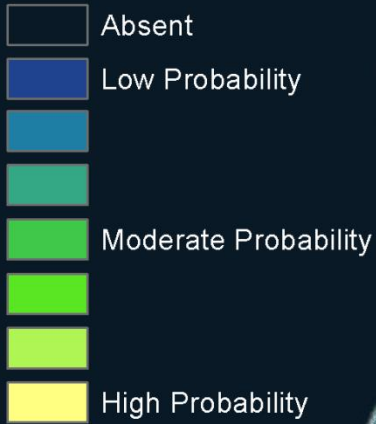
## Gorse Probability Category



Sources: Esri, DigitalGlobe, GeoEye, Earthstar Geographics, CNES/Airbus DS, USDA, USGS, AEX, Getmapping, Aerogrid, IGN, IGP, swisstopo, and the GIS User Community, Esri, HERE, DeLorme, MapmyIndia, © OpenStreetMap contributors, and the GIS user community

# Gold Beach

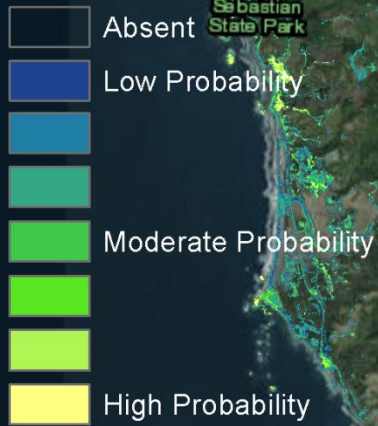
## Gorse Probability Category



Sources: Esri, DigitalGlobe, GeoEye, Earthstar Geographics, CNES/Airbus DS, USDA, USGS, AEX, Getmapping, Aerogrid, IGN, IGP, swisstopo, and the GIS User Community, Esri, HERE, DeLorme, MapmyIndia, © OpenStreetMap contributors, and the GIS user community

# Brookings

## Gorse Probability Category



Source: Esri, DigitalGlobe, GeoEye, Earthstar Geographics, CNES/Airbus DS, USDA, USGS, AEX, Getmapping, Aerogrid, IGN, IGP, swisstopo, and the GIS User Community, Esri, HERE, DeLorme, MapmyIndia, © OpenStreetMap contributors, and the GIS user community

# The Oregon Wildfire Risk Explorer



Wildfires in Oregon have become increasingly common, widespread and destructive, and local fire prevention efforts and response planning are key to better prepare communities and reduce losses from catastrophic fires. In order to plan effectively, communities need to obtain consistent, wall-to-wall wildfire risk data and other resources in a form that is usable and interpretable for community planners. The Oregon Department of Forestry, in partnership with the Institute for Natural Resources at Oregon State University, is launching a new project to bring wildfire risk data to community planners and the public in Oregon. In this project, we will work with fire managers, agency representatives and other interested stakeholders to develop a web tool through the existing Oregon Explorer website, which has been successfully used by natural resource managers and planners throughout Oregon. The tool will showcase the recently developed West Wide Risk Assessment, a large-scale assessment of wildfire risk across 17 western states. The tool will allow the user to view, query, and download data, and generate maps and reports specific to their area of interest. It will also provide a platform for displaying other relevant data and resources, and updated wildfire risk information over time. The goals are to increase wildfire awareness, increase local capacity for developing and updating Community Wildfire Protection Plans (CWPPs), and help communities identify and prioritize fuel treatment and other risk reduction projects.

This project will engage a steering committee, stakeholders, and beta testers to develop this tool over the course of a three-year project (2016-2018). It will consist of four major phases:

- ❖ Collaborative design and scoping process: work with project partners and the steering committee to design the Wildfire Risk Explorer site to access data and resources.
- ❖ Oregon Wildfire Risk Explorer development and beta testing: develop and beta test a public viewer to make wildfire risk data accessible to interested citizens, and a professional viewer to inform the CWPP process in local communities.
- ❖ Implementation: Work with communities to use the newly developed tool for CWPP updates and development for a select group of pilot projects throughout the state.
- ❖ Training and support: Provide workshops and training materials for agency staff, CWPP partners and emergency management professionals.

For more information, contact the project coordinator:

Megan Creutzburg | Institute for Natural Resources, Oregon State University  
[megan.creutzburg@oregonstate.edu](mailto:megan.creutzburg@oregonstate.edu) | 503-725-9957 (office) | 503-939-8478 (cell)